



4500 Hardscrabble Road  
Columbia, SC 29229



4500 Hardscrabble Road  
Columbia, SC 29229  
803-462-0024  
Fax 803-462-0508

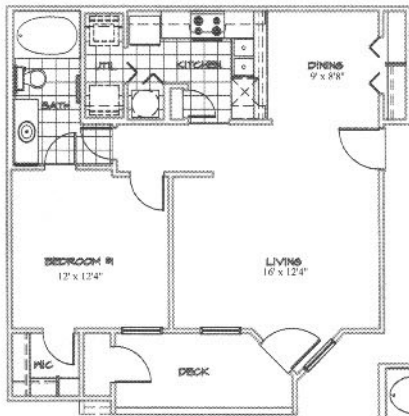
professionally managed by P.I.C. properties

# COMMUNITY FEATURES

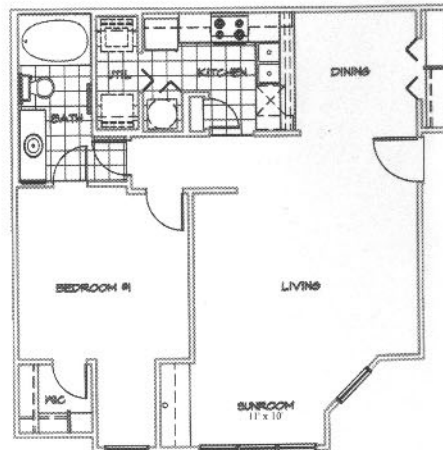
- Fully Equipped Fitness Center
- Clubhouse
- Swimming Pool
- Personal Garages Available
- Outside Storage Facilities Available
- Business Center
- High Speed Internet Connections
- Stocked Pond

please note: square footage is approximate

## 1 Bedroom Floor Plans

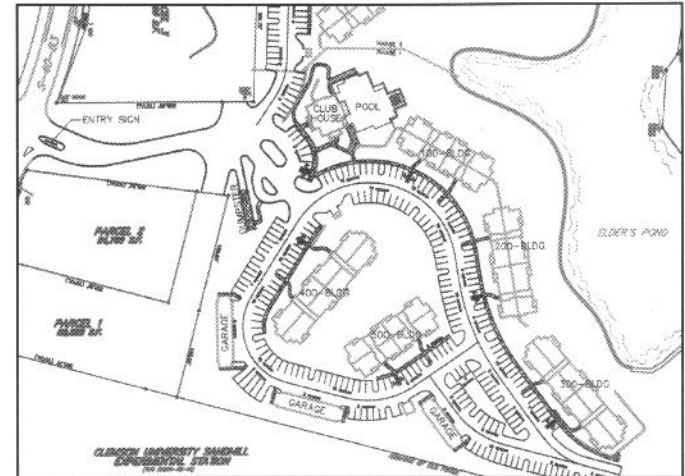


1 bedroom  
with deck  
730 SF  
\$ \_\_\_\_\_



1 bedroom  
with sunroom  
819 SF  
\$ \_\_\_\_\_

## Site Map



## Directions

### From Spartanburg

I-26 East to Columbia

I-20 East to Florence

Exit 73B, SC-277

I-77 North

Immediately exit onto Farrow Road, Turn left

Approximately 1/2 mile turn right onto Hardscrabble Road

Several miles down, cross over Clemson Road

Property is approximately 1/2 mile past the intersection on the right

### From Charleston

I-26 West to Columbia

I-77 North to Charlotte

Exit onto Farrow Road, Turn left

Approximately 1/2 mile turn right onto Hardscrabble Road

Several miles down, cross over Clemson Road

Property is approximately 1/2 mile past the intersection on the right

### From Florence

I-20 West to Augusta

Exit 80, Clemson Road

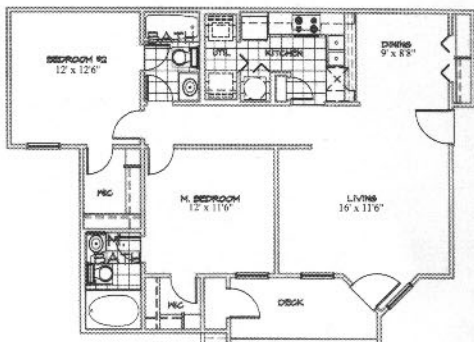
Turn right

At 4th light turn right onto Hardscrabble Road

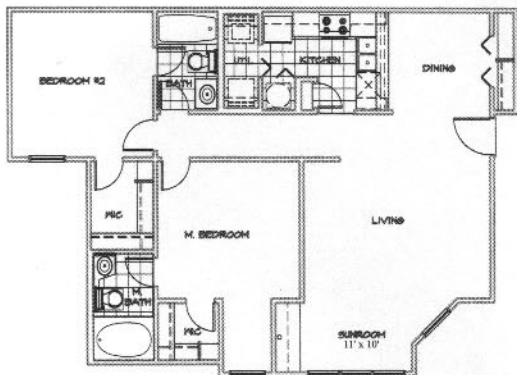
Property is approximately 1/2 mile on the right

## 2 Bedroom Floor Plans

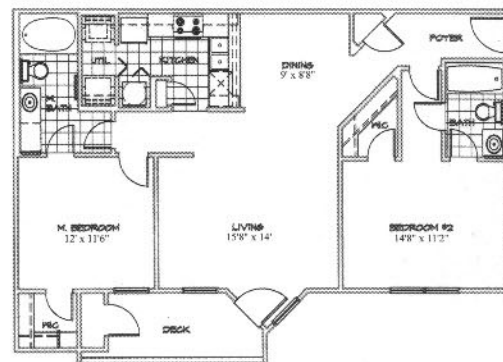
2 bedroom  
with deck  
970 SF  
\$ \_\_\_\_\_



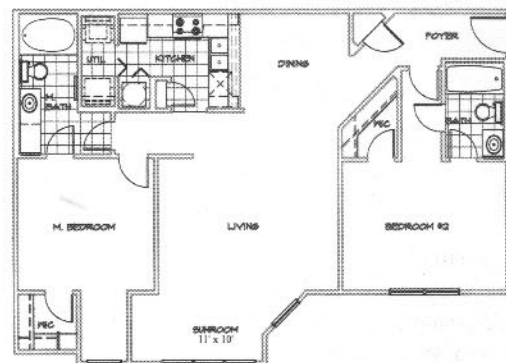
2 bedroom  
with sunroom  
1059 SF  
\$ \_\_\_\_\_



2 bedroom  
roommate  
style  
with deck  
1057 SF  
\$ \_\_\_\_\_

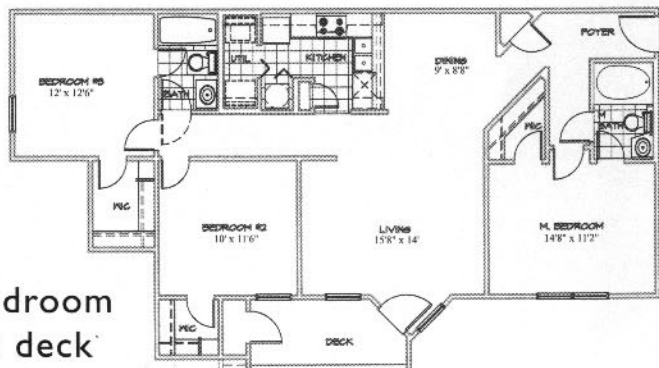


2 bedroom  
roommate  
style  
with sunroom  
1145 SF  
\$ \_\_\_\_\_



## 3 Bedroom Floor Plans

3 bedroom  
with deck  
1248 SF  
\$ \_\_\_\_\_



3 bedroom  
with sunroom  
1337 SF  
\$ \_\_\_\_\_

